

Classification	NAPOPC_CE5 FAQ				No.	1-005-E	
Author	James	Version	1.0.0	Date	2010/7/12	Page	1/6

How to use ET-7000 modules in NAPOPC_CE5?

Applies to:

Platform	OS version	NAPOPC version
WinPAC / ViewPAC	CE5	NAPOPC_CE5 v2.20

There are two ways to communicate with ET-7000:

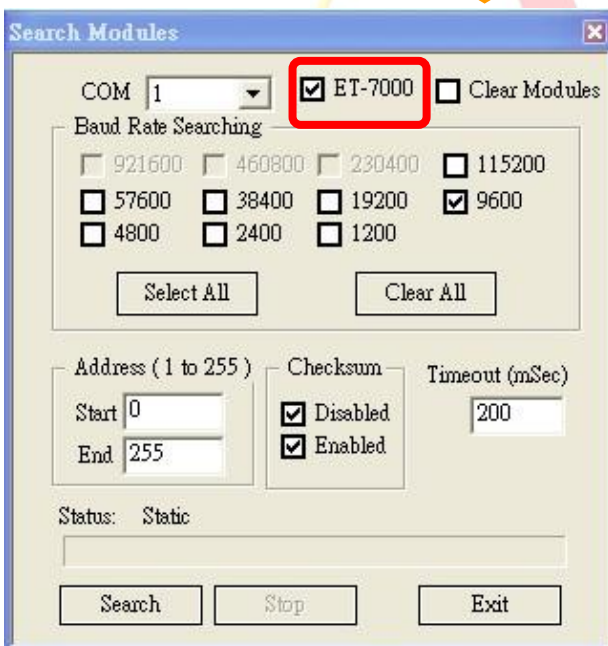
Search (Automatic) / Add Device (Manual)

We use ET-7060 as an example:

Search (Automatic)

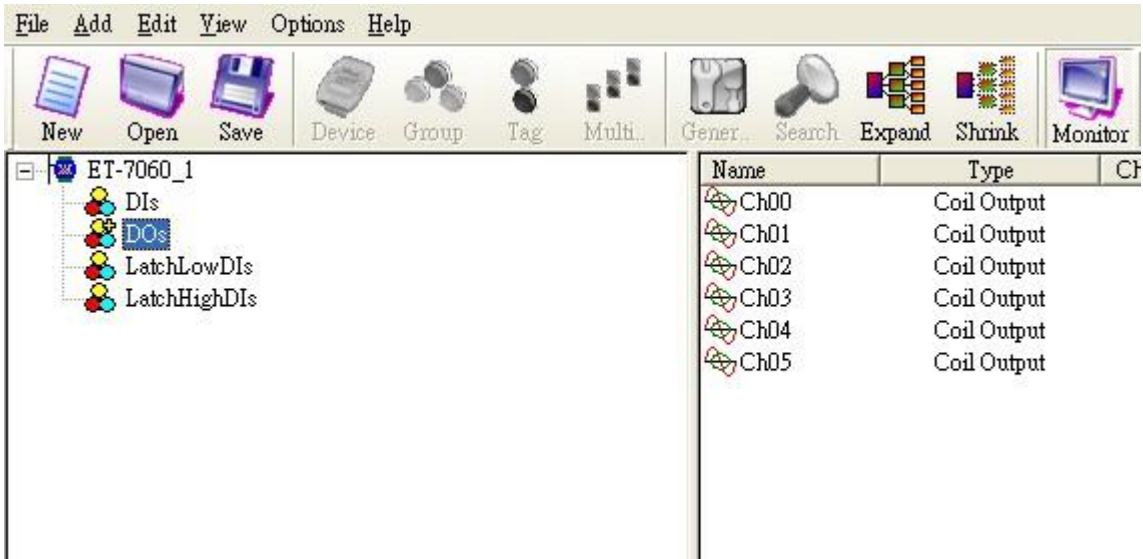
Step 1

Click "Search" on the Toolbar, it will show you a dialog as below:



Just check "ET-7000" box, then press "Search" button to search.

Classification	NAPOPC_CE5 FAQ				No.	1-005-E	
Author	James	Version	1.0.0	Date	2010/7/12	Page	2/6



Communication will be established, and you can exchange data between WinPAC/ViewPAC and ET-7060.

Add Device (Manual)

Step 1

Click "Device" on the Toolbar, it will show you the dialog as below.



Classification	NAPOPC_CE5 FAQ			No.	1-005-E		
Author	James	Version	1.0.0	Date	2010/7/12	Page	3/6

The protocol of ET-7060 is Modbus. Choose it first.

Modbus TCP mode

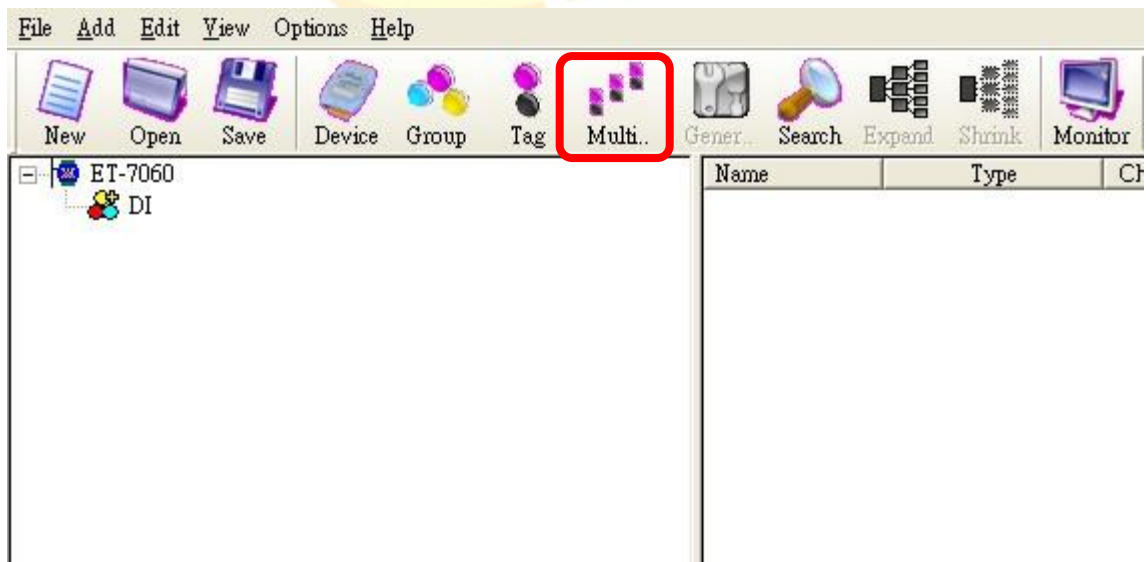
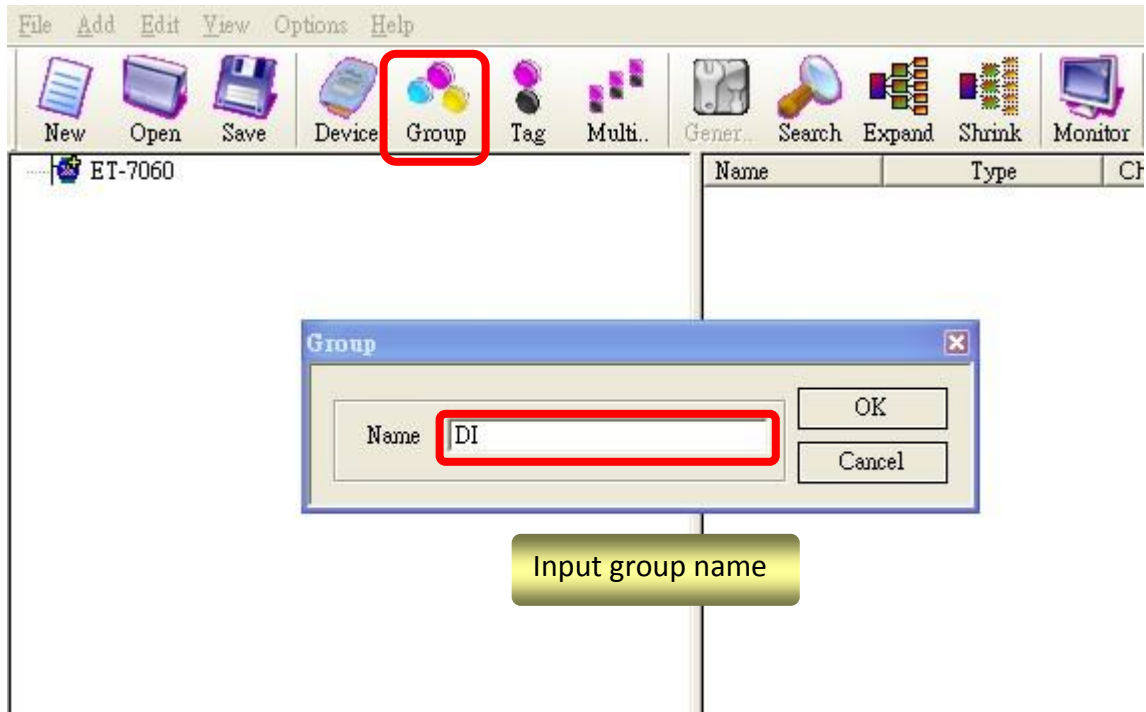
IP Address of ET-7060

Check the options which are marked, then click "OK" to add device.

Classification	NAPOPC_CE5 FAQ				No.	1-005-E	
Author	James	Version	1.0.0	Date	2010/7/12	Page	4/6

Step 2

After adding ET-7060, click "Group" on the Toolbar to add group for ET-7060. Input group name in the "Group" dialog. (For example, group name is "DI".)



Classification	NAPOPC_CE5 FAQ				No.	1-005-E	
Author	James	Version	1.0.0	Date	2010/7/12	Page	5/6

Step 3

Now ET-7060 has “DI” group, you should add tags inside “DI” group. Click “Multi tags” on the Toolbar.

Prototype of DI

Prototype

Coil Input Coil Output Register Input Register Output

Data Type

Bool Short Long Float Word DWord

Modbus Address

From: To:

Separation:

OK
Cancel

Data type, only Boolean could be chosen for DI

The range of DI address

Separation between each address

Click "OK" to add tags after checking these options.

Step 4

File Add Edit View Options Help

New Open Save Device Group Tag Multi... Gener... Search Expand Shrink Monitor Cut Copy

ET-7060

Name	Type	Channel/Location
Tag0001	Coil Input	100001
Tag0002	Coil Input	100002
Tag0003	Coil Input	100003
Tag0004	Coil Input	100004
Tag0005	Coil Input	100005
Tag0006	Coil Input	100006

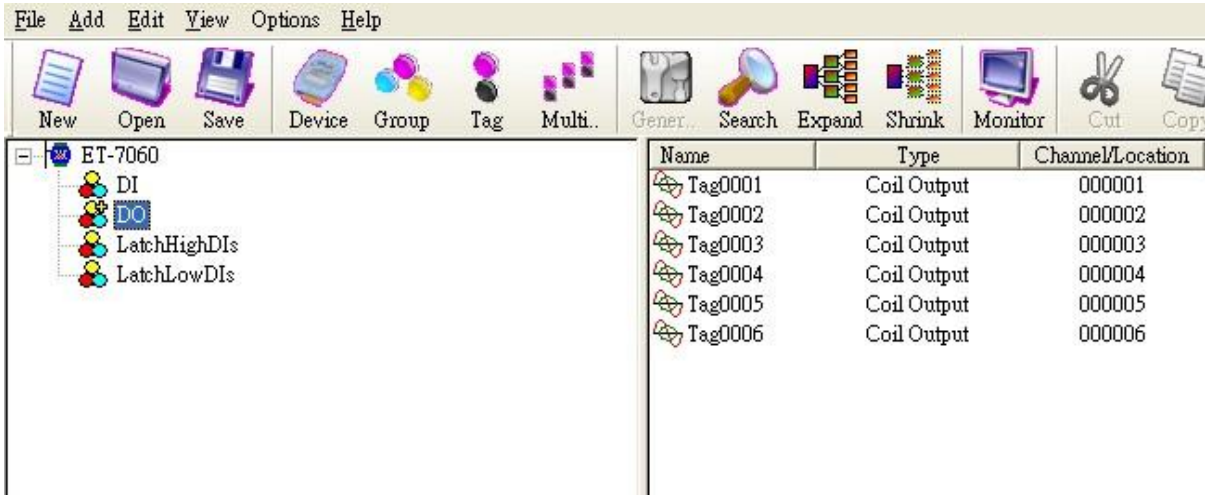
You could communicate with DI of ET-7060 now. You could also add other tags as the same way just notice the difference of [address](#) and [Prototype](#).

Classification	NAPOPC_CE5 FAQ				No.	1-005-E	
Author	James	Version	1.0.0	Date	2010/7/12	Page	6/6

DO: 1~6 (Coil Output)

LatchHighDIs: 33~38

LatchLowDIs 65~70



Finally, you could accomplish the entire communication between NAPOPC_CE5 and ET-7060.

⚠ Caution:

In the whole procedure you will have several actions about “add” something, such as “Group” or “Tag”. Before adding something for a certain part, **you have to click the part first, and then you could add what you want.**

For example:

If you intend to add tags for “DO” group, you should click “DO” in the group list to focus on the group, and then click “Multi tags” to add tags. This is the correct way to add group/tag.